

## Condensate Safety Overflow Switch for Primary and Secondary Drain Pans

Cuts power to an air conditioning system when a clog or backup occurs preventing water damage

### STEP 1:

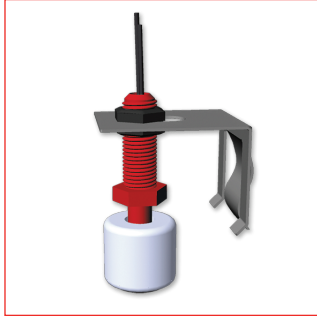


FIG. 1: FLOAT SWITCH

Attach the CS-3 switch assembly to the drain pan using the integrated “easy clip” bracket. The sensor can be wired in series to break control voltage (typically either the red or yellow wires). Max current: 1.5 amp @ 24VAC.

Connect the power and confirm that the switch is wired correctly by moving the float to the up position. The CS-3 should interrupt power to the HVAC system when the float is in the up position.

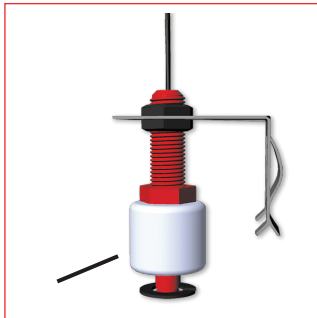
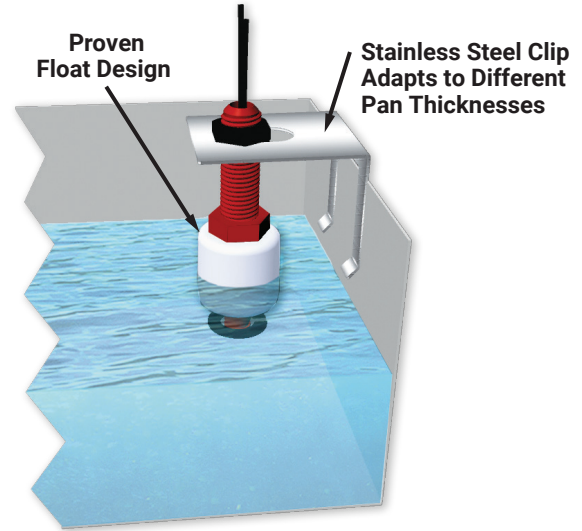


FIG. 2: FLOAT SWITCH  
(Shown Activated)

The activation level can be adjusted by moving the threaded shaft up or down on the “easy clip” bracket. Block the out-flow from the drain pan and fill the drain pan with water. Loosen both nuts on the easy clip bracket and adjust the height of the threaded shaft to the desired activation level. Securely tighten both nuts to prevent the switch from becoming dislodged.

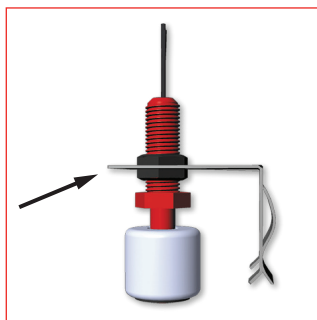


FIG. 3: EXAMPLE OF HIGH ACTIVATION

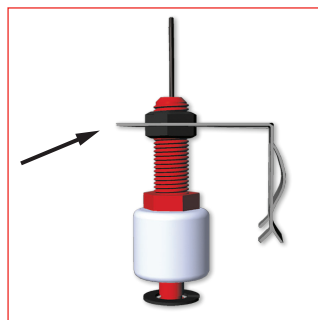


FIG. 4: EXAMPLE OF LOW ACTIVATION

### STEP 2: Wiring Instructions

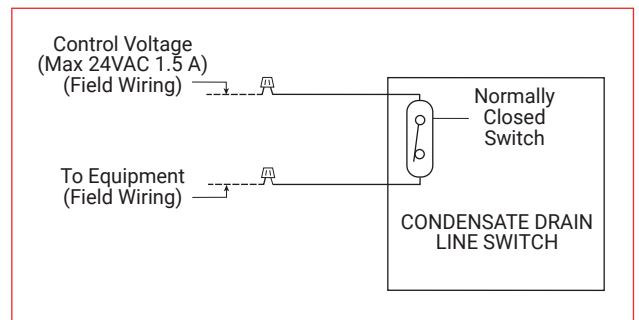


FIG. 5: WIRING DIAGRAM